



## **E: Community Consultation**

E.1 - Community Consultation - Drop in Day Poster 23.10.12

E.2 - Community Questionnaire 23.10.12

E.3 - Design Leaflet 04.03.13

E.4 - Design options presentation 12.06.13

E.5 - Final Proposals Poster 20.06.13

Your local hall and community facility..... the next 60 years.....

**23rd October 2012**

**Barrhill Memorial Hall - Consultation**

Drop-in any time from 3pm till 7pm

Discussion meeting at 7pm

You may have heard that South Ayrshire Council is going to use the Hall for decant accommodation to allow the school to be upgraded and modernised.

Whilst this is happening we cannot carry out our own proposals for repairing and upgrading the Hall but we plan to use this time productively. If you agree we are going to try and obtain additional grant funding from the Lottery to make sure that we make the absolute most of our Memorial Hall in the future. If we are successful as soon as the school is back in its building we will be able to not just do the essential works - re-roofing, insulation, new windows, damp proofing and masonry repairs but also we will be able to realise the vision outlined in the previous Feasibility Study work and community consultation to have a new fit for purpose kitchen toilets meeting room and more.

**Come along - Let us know what you think.....**

We want to make the absolute most of our Memorial Hall. Our architect Karen Anderson of Anderson Bell Christie has been talking to some of you and so far there has been a great deal of enthusiasm about the suggestion to apply for Big Lottery Grant and lots of good suggestions of what could happen.

Many of you have said they think that the Memorial hall is a great community asset but it can be more in the future - not just be a place for community functions, but a place where visitors to the area can learn about our unique historical and natural heritage, whilst enjoying a coffee and a home-baked cake and potentially can buy local food and crafts. It can provide support to local business with a space where there is wi-fi, meeting rooms and a show case for local talent and produce. A hub for supporting any new or existing local businesses or community support services.

This can be linked to the improvements at the school and the proposed car park and this will allow the village to make the most of all the local community investment.

Many of these are ideas that have been discussed at consultations before but if we are to go forward the Lottery will have to be satisfied that our ideas are right for the community.

**We would therefore like you to come along to a drop in session or discussion meeting at the Hall with the architects on 23<sup>rd</sup> October. We want to hear your views.....**

**ALL WELCOME**

Your views and support are very important to us. Please come along on the 23<sup>rd</sup> October 2012. If you cannot make it that day or evening we still really want to hear your views. You can email them to Karen direct at [karenanderson@andersonbellchristie.com](mailto:karenanderson@andersonbellchristie.com) or telephone her on 0141 339 1515 .



# BARRHILL MEMORIAL HALL

## Background

With the current funds available the Hall can have a new roof, windows, doors, toilets & kitchen fittings etc. It can have its insulation upgraded, key repairs to the walls and drainage. There is not presently enough funding to extend the kitchen and improve the toilets and circulation as originally proposed in the Feasibility Study. The Committee would like to apply for more funds for Lottery and others to do so.

In order to establish what you think, we would be obliged if you could answer the questions below:

**1. Do you agree that it is a good idea for the hall to be altered and extended in the future, rather than being repaired and refurbished only?**

Yes  (13)

No

If SO WHY? Or any other COMMENTS

- New extension+ kitchen ok but nothing too large as hall is currently under used
- Spending large amount unrealistic
- Address issue of store- kids toys currently outside!
- Ads to longevity of hall
- The provision of a better kitchen is the main priority- long overdue!
- Extension/alteration allows for future needs and requirements

**2. Do you agree that the local Community would benefit from a newly improved Hall for accommodating existing activities and generating new ones?**

Yes  (13)

No

If SO WHY? Or any other COMMENTS

- As long as it is sustainable
- Surgery potential but dispensary
- Barr guild + rural have gone due to good church loss- one service/month in hall
- Keep fit not supported lack of interest
- The hall is currently used by different user groups- improvements allowing wider access to other individuals/groups only a good thing- not currently used to its capacity
- Scope for wider variety of activities
- Not keen on previous extension proposals with glass extension
- There are so many groups in the village who would use an improved hall

**3. Do you agree that Visitors to the area would benefit from a newly improved Hall for accommodating learning more about the village and wider area and what happens in and around it?**

Yes iiiiiiiiii (11)

No ii (2)

**If SO WHY? Or any other COMMENTS**

- With all the emphasis on eg Galloway + Dark Skies etc, if people are passing through Barrhill they really need a place (and reason) to stop in Barrhill. This would be ideal in the hall and with information etc.
- The more info available for visitors the better
- Barrhill is such a lovely area and could really attract more visitors by having a visitors centre

**Suggestions have been made for what is needed in the Hall in the future.**

**What do you think?**

- Stage required but possibly still used for sporting activity to attract youngsters

**1. The Hall could be extended so that a new kitchen could be provided. This could service a small coffee shop as well as functions in the hall. Do you think this is a good idea?**

Yes iiiiiiiiii (11)

No ii (2)

**If SO WHY? Or any other COMMENTS**

- Good for encouraging passing trade/tourists into village @ wknd. Ensure doesn't take away from existing village café- this is more for truckers/locals during week.
- Unlikely to be sustainable
- Hall cannot make loss
- Gives people a reason to stop
- Superb! Whenever people can have a nice uppa they stop. This could only benefit the community.

**2. The Hall could be extended so that visitor information about the area could be provided along with a shop promoting local crafts, businesses and food making. Do you think this is a good idea?**

Yes iiiiiiiiii (10)

No iii (3)

**If SO WHY? Or any other COMMENTS**

- Sell local produce- eg eggs; piggery;

- Unlikely to attract sufficient trade to make sustainable
- Visitor info a good idea
- Concern about sustaining a shop
- We need to encourage people to stop
- Also good for youth café?- wifi/ games

**3. The Hall could be extended so that it could provide support services for local businesses or other services. EG Internet access, printing facilities and training accommodation? Or a room for the local podiatry or other service?**

Yes iiiiii (8)

No iiiii(5)

**If SO WHY? Or any other COMMENTS**

- Possibility of extending up/using double height space more efficiently?
- Previously attempted but failed- photocopy never used
- Internet access may be helpful but difficult to supervise
- Computers previously provided but not used- would possibly be used for other services such as podiatry
- All these services reach out to a wide range of groups in the community and are therefore a positive move

**4. It has been identified that young folks and children in the area need more things to do. Do you think the Hall can help here? If so what might happen?**

- Younger focus important and should take lead- future of village/post existing community
- Badminton; indoor bowls; snooker table;
- solar panels on south facing roof
- case for underfloor heating
- Employ someone to run centre- lottery 3years.
- Speak to local councillor
- Worried about inertia- need volunteers!
- Concern about running cost once council stops contributing.
- Youth club would be good- no where for youngsters in the village
- Good idea- attempted previously but insufficient helpers!
- Sports facilities
- New gym? Popular at daily centre

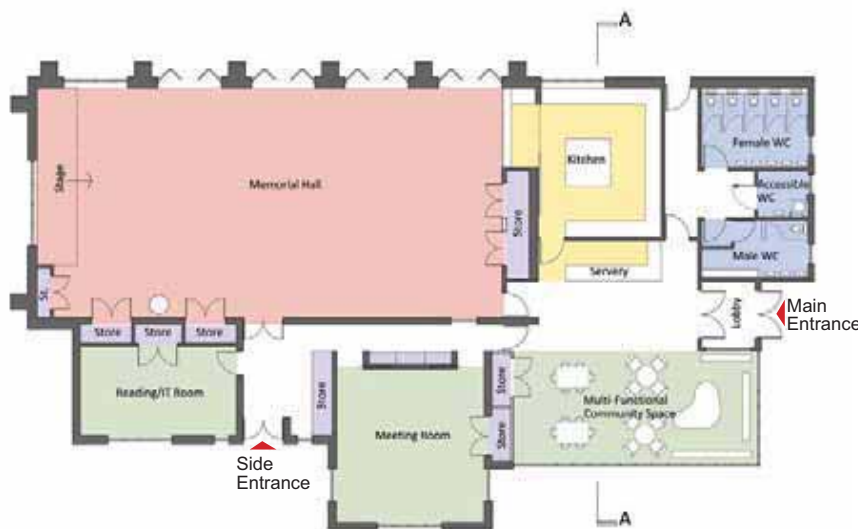
***Thank you for your time!!***

If you would like to get involved or in contact us or the architect please leave your name & contact details.

# BARRHILL MEMORIAL HALL .....The Future



Using the feed back from the last community consultation, our architects at Anderson Bell Christie have made further progress with proposals which will enable our community gain maximum benefit from the Memorial Hall now and for many years to come. There will be an extension towards the car park area, a new public entrance, a new kitchen and a multi-functional community space; all designed to be welcoming.



The Memorial Hall is a great community asset but it can be more in the future. The new design provides spaces for our existing community functions and allows the possibility for new uses and groups to develop. It is designed to be flexible so that it could become a place where visitors to the area can learn about our unique historical and natural heritage, whilst enjoying a coffee and potentially buy local food and crafts. Or it could provide support to new or existing local business with wi-fi, meeting rooms and a venue for conferences. Or even a hub for community health, education and support services. There are also proposals for a car park and extensions to the school which taken together, make a significant development of community facilities for Barrhill. By liaising with the architects of the other proposals, our architects are seeking to make the most of the opportunities this development offers.

**In order to realise this important project for the community we need YOUR support.  
We'd like to hear what you think about the new proposals.**

Get in touch with the Hall Committee (BMHCA Trustees) or email the Architects on: [carolinedearden@andersonbellchristie.com](mailto:carolinedearden@andersonbellchristie.com)



Elevation to Main Steet



Elevation to Car Park



Section through extension

## REFURBISHING BARRHILL MEMORIAL HALL *A Springboard to Make it Happen*

This project is part-financed by the Scottish Government, European Community and Ayrshire LEADER 2007-2013 Programme  
Also part-financed by Barrhill Memorial Hall Community Association



The European Agricultural Fund  
for Rural Development:  
**Europe investing in rural areas**

# Barrhill Memorial Hall: Design Review 12.06.2013



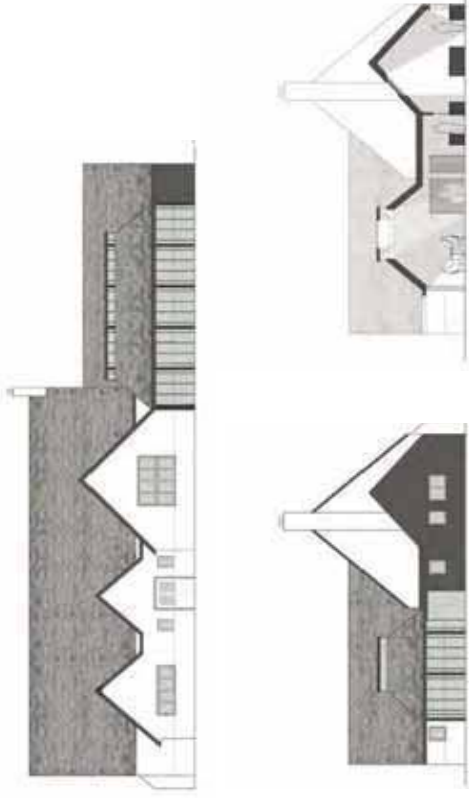
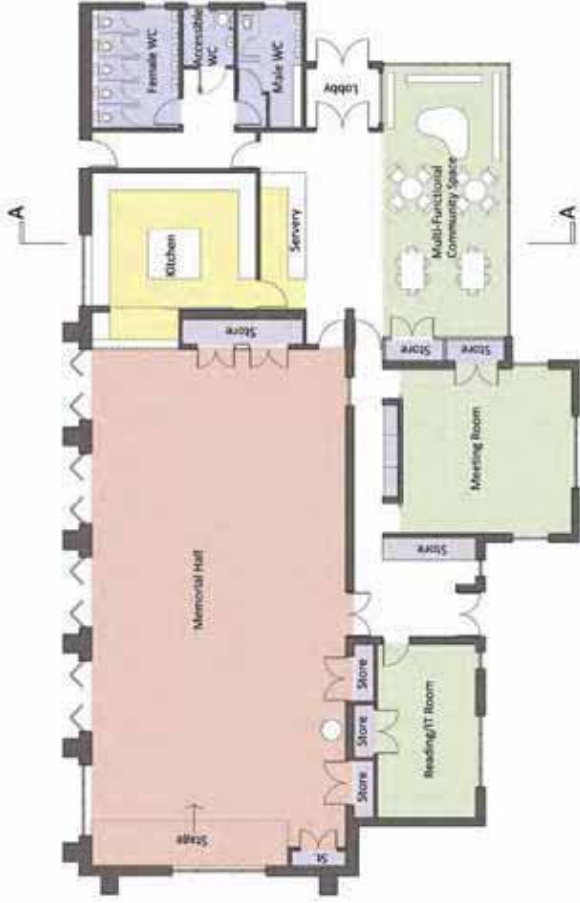
## REFURBISHING BARRHILL MEMORIAL HALL *A Springboard to Make it Happen*

This project is part-financed by the Scottish Government,  
European Community and Ayrshire LEADER 2007-2013 Programme  
Also part-financed by Barrhill Memorial Hall Community Association

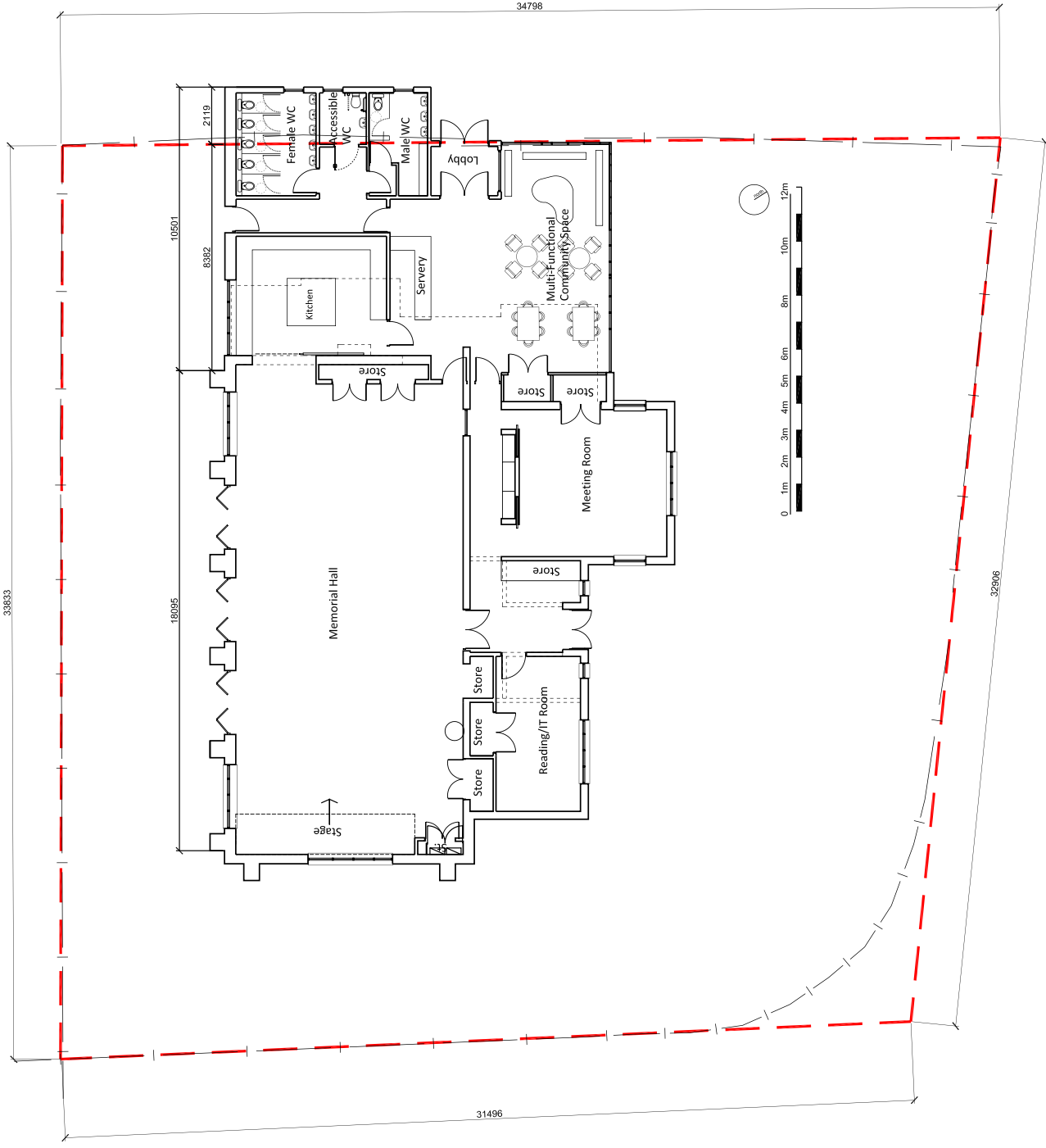


The European Agricultural Fund  
for Rural Development:  
**Europe investing in rural areas**

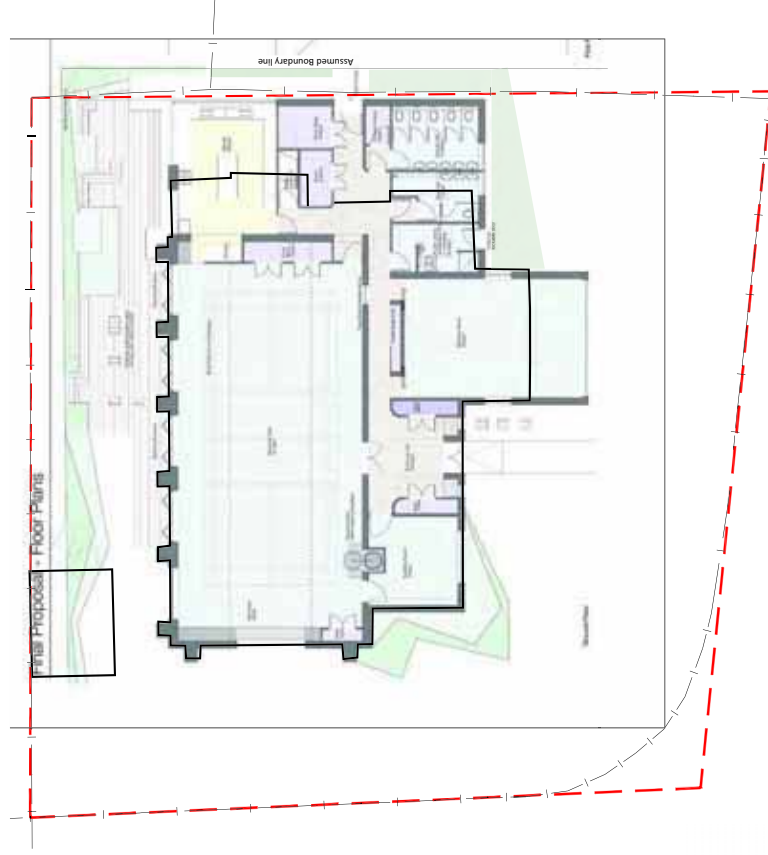
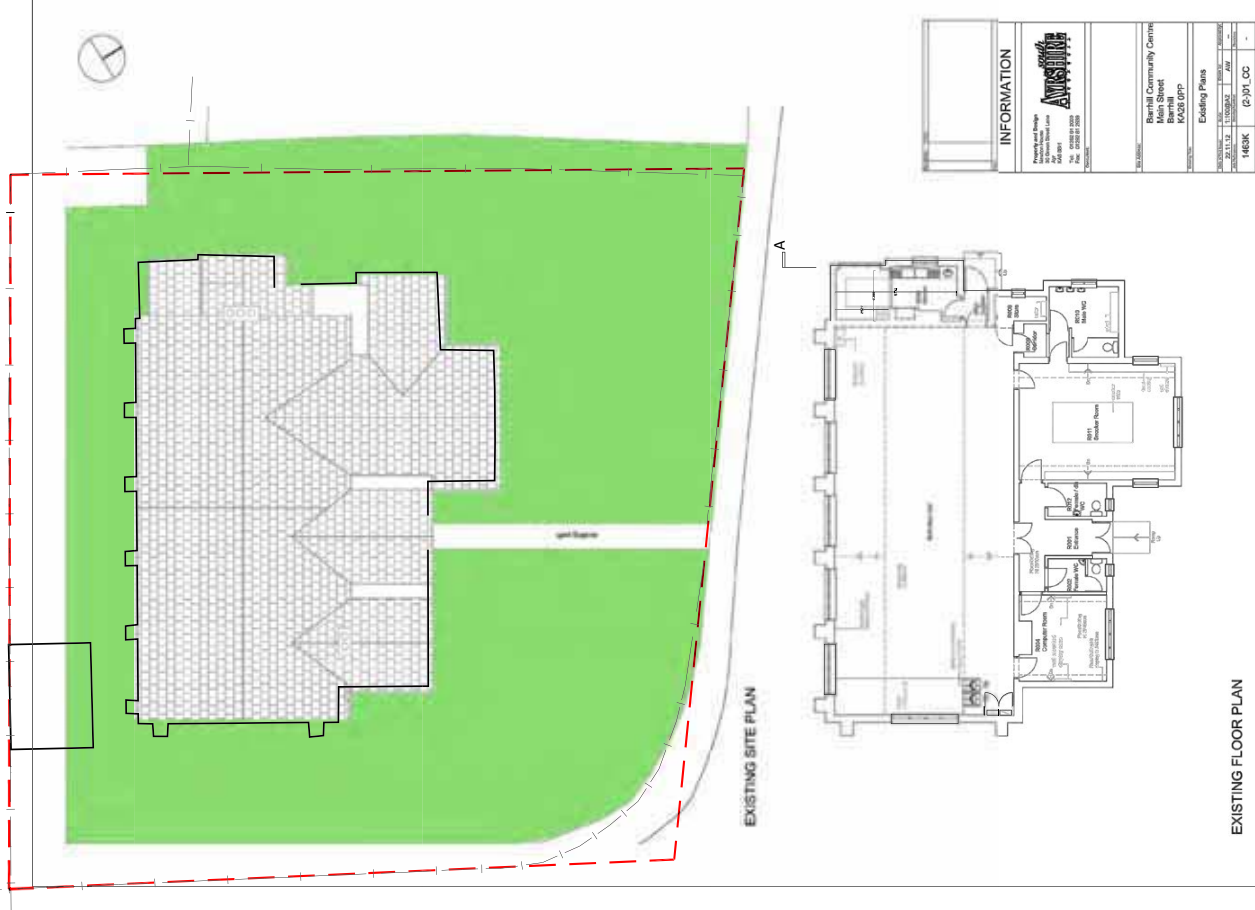




## 01 PREVIOUS PROPOSALS: FEEDBACK

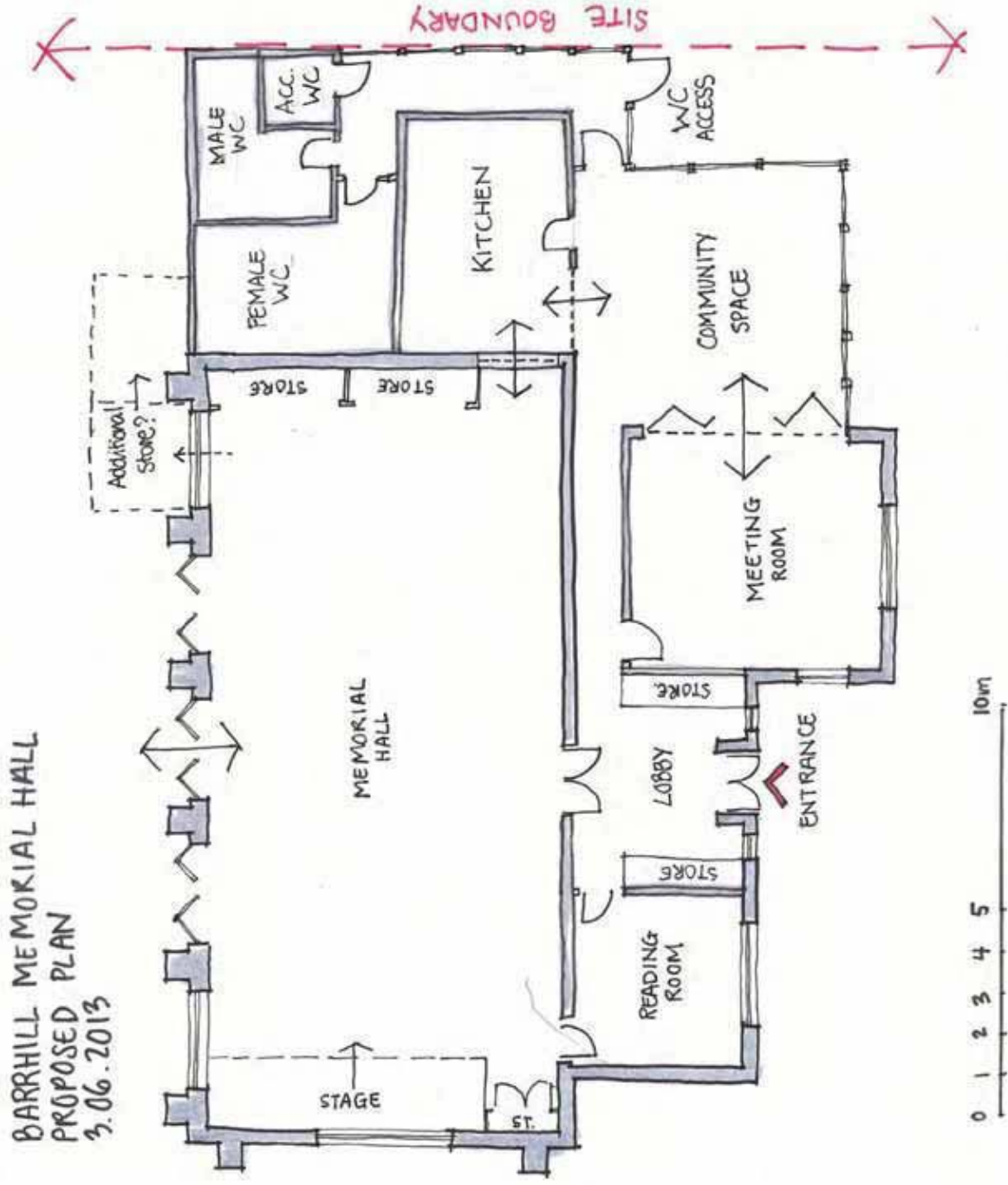


# 01 PREVIOUS PROPOSALS: BOUNDARY CLARIFICATION



EXISTING FLOOR PLAN

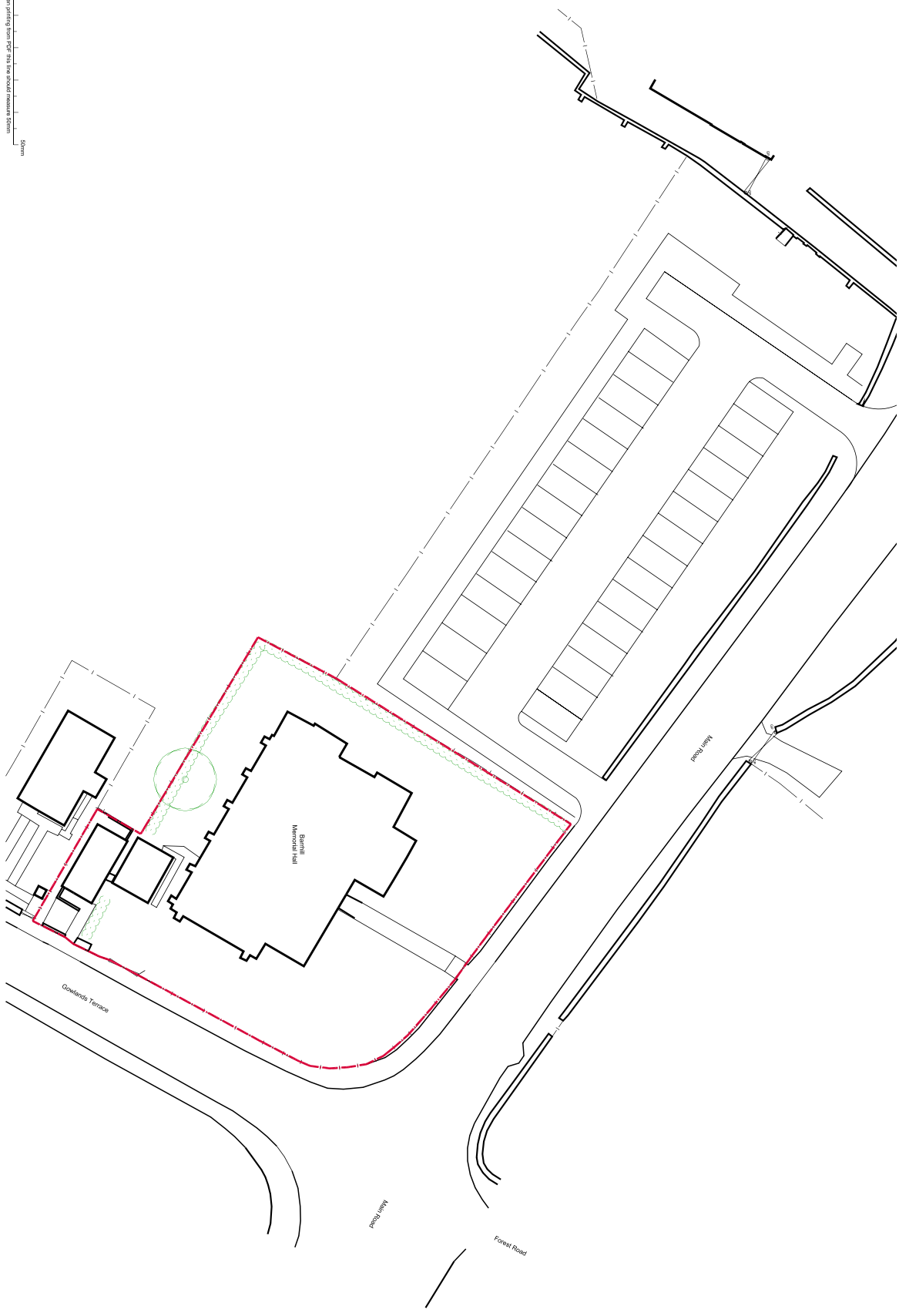
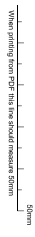
# 01 PREVIOUS PROPOSALS: ASSUMED BOUNDARY



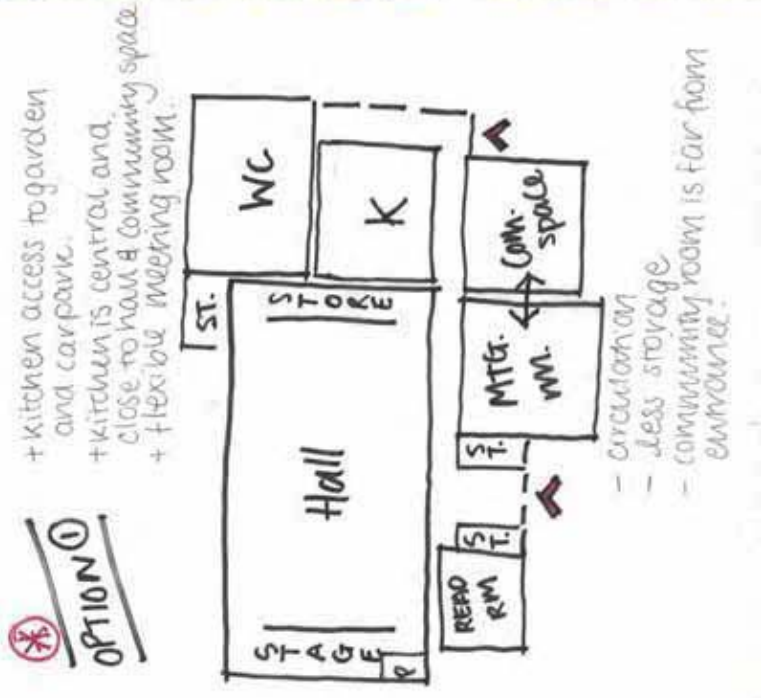
## 01 PREVIOUS PROPOSALS: RESIZE EXTENSION



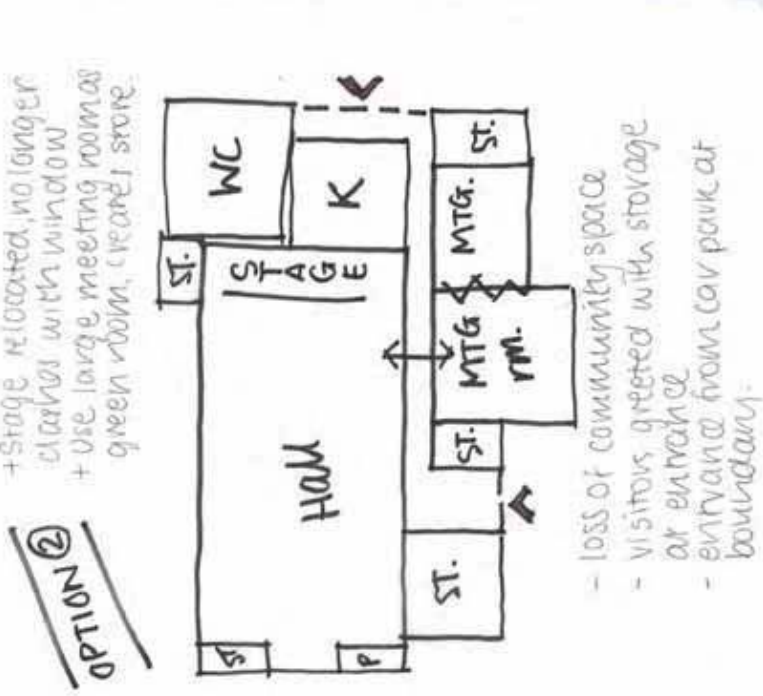
**02 SITE PLAN: DESIGN PRINCIPALS**



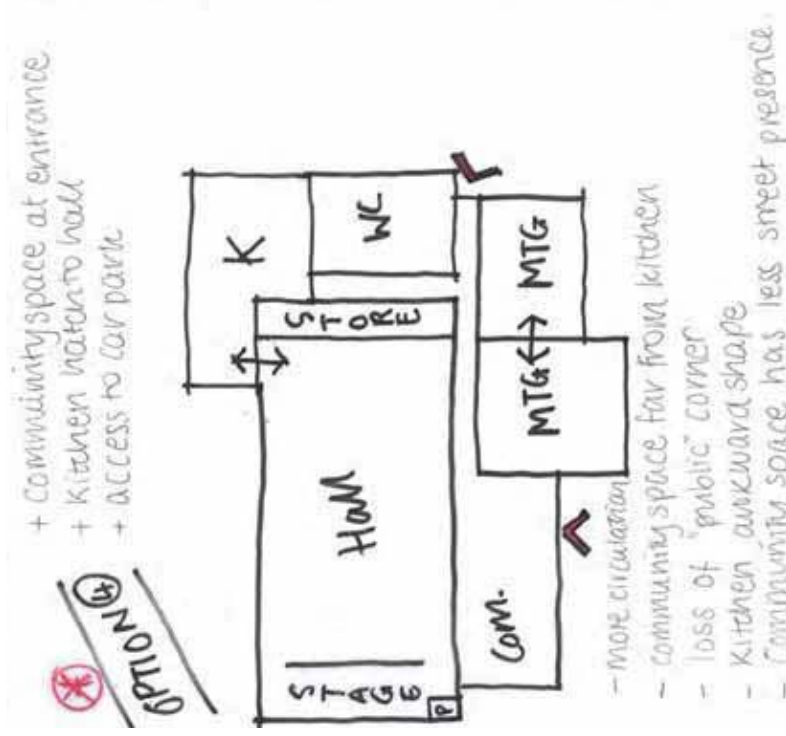
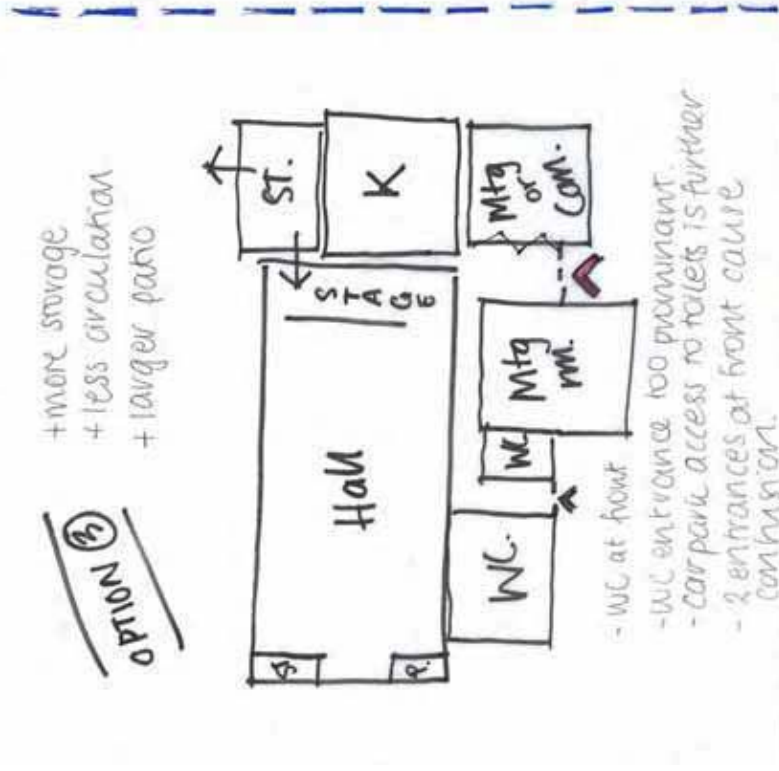
## 02 SITE PLAN: CAR PARK PROPOSALS



**OPTION A+B**



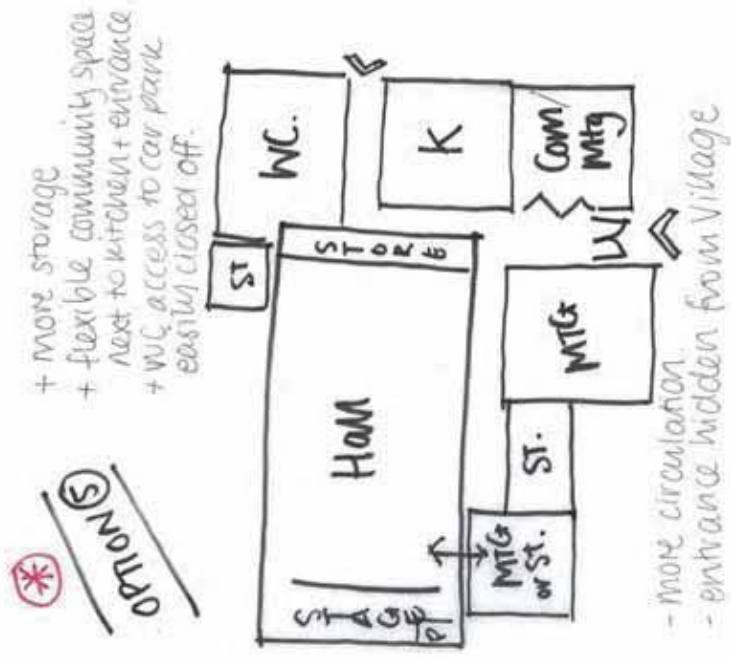
**03 ACCOMMODATION ADJACENCY DIAGRAM: OPTIONS APPRAISAL**



## OPTION C

### 03 ACCOMMODATION ADJACENCY DIAGRAM: OPTIONS APPRAISAL

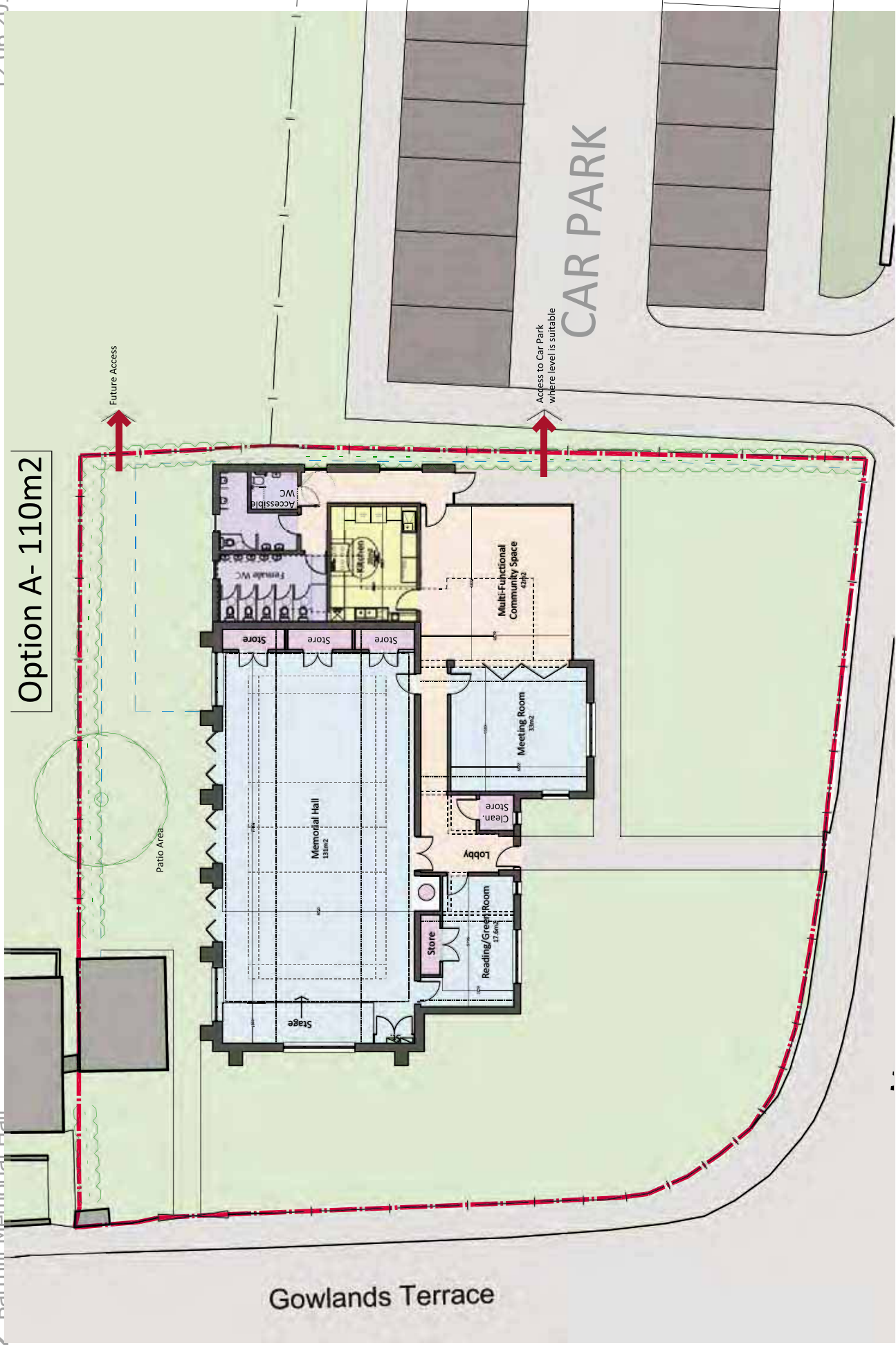




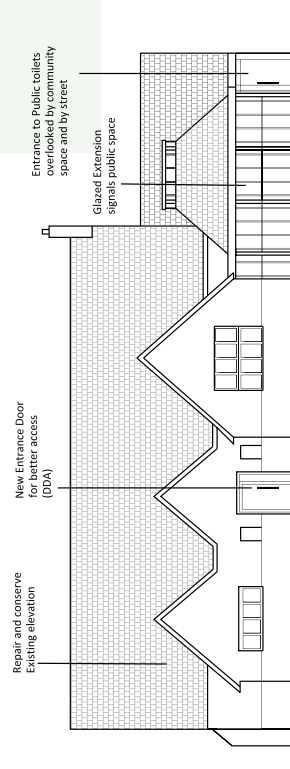
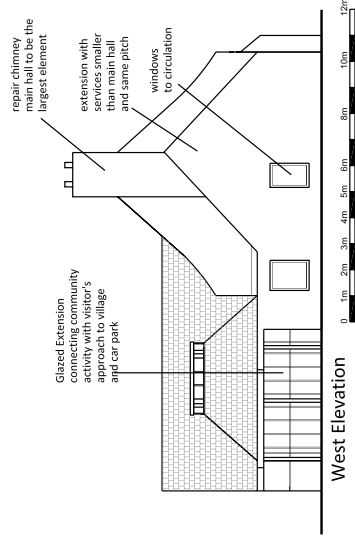
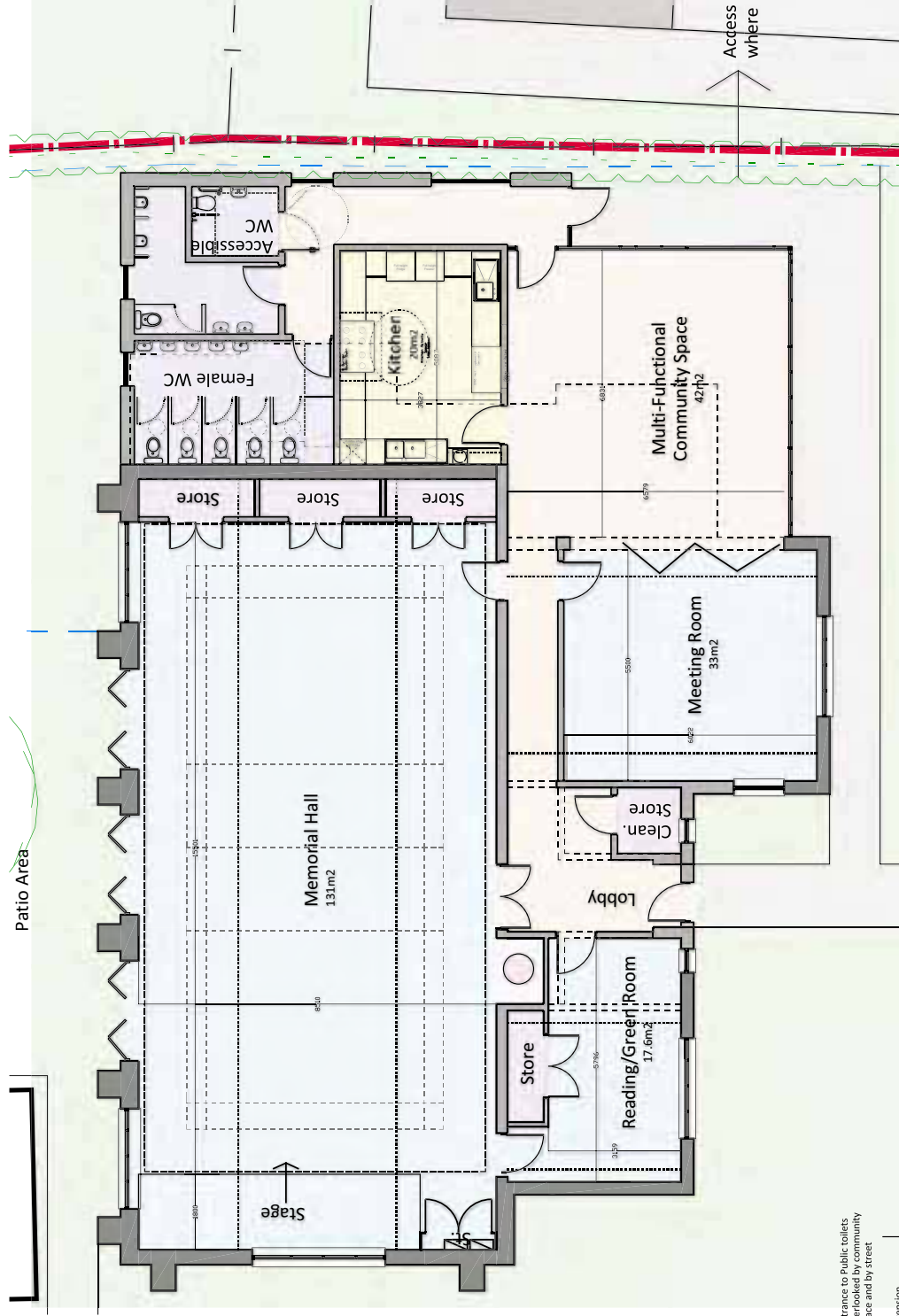
## OPTION D

### 03 ACCOMMODATION ADJACENCY DIAGRAM: OPTIONS APPRAISAL

Option A- 110m2

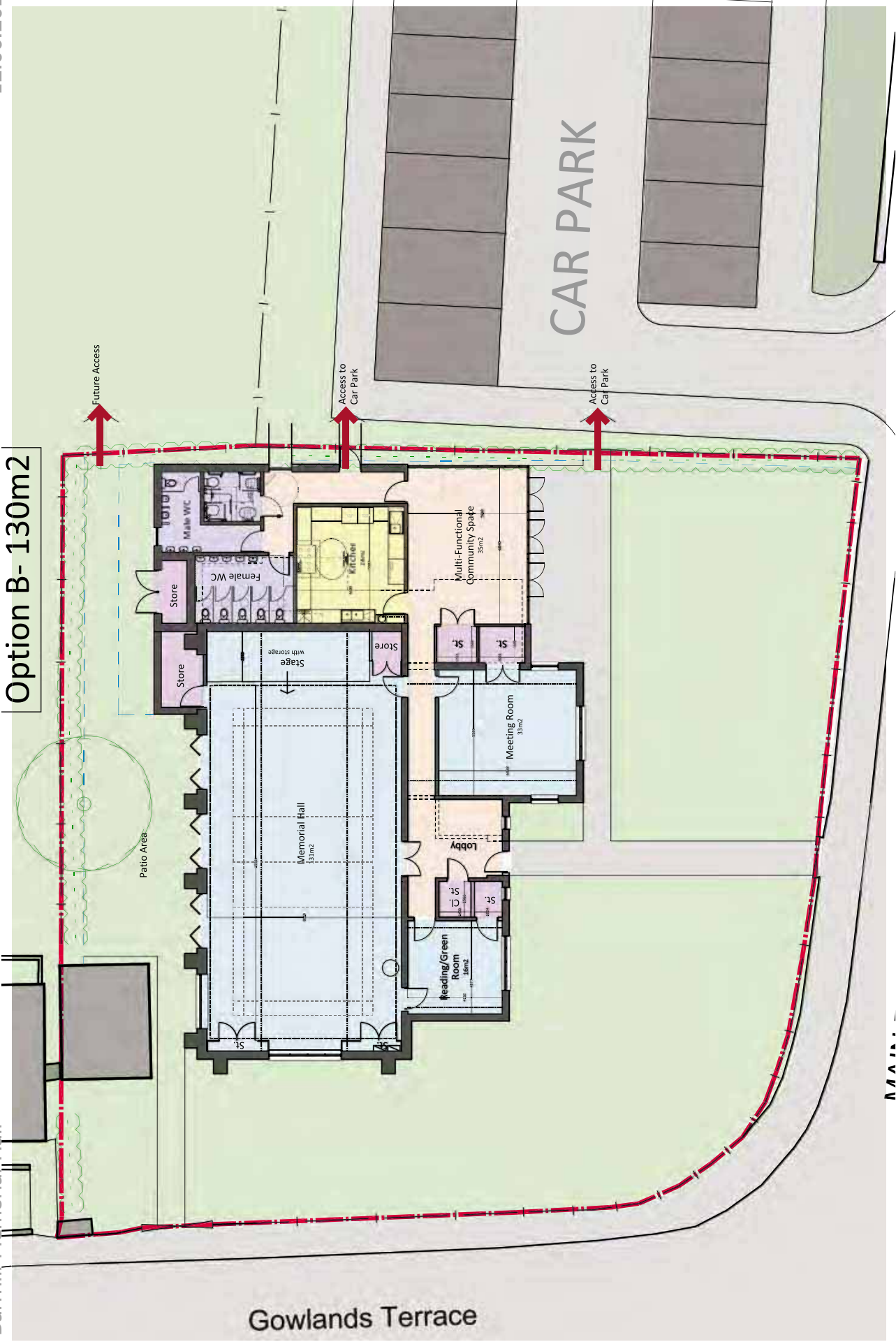


04 OPTIONS APPRAISAL: OPTION A

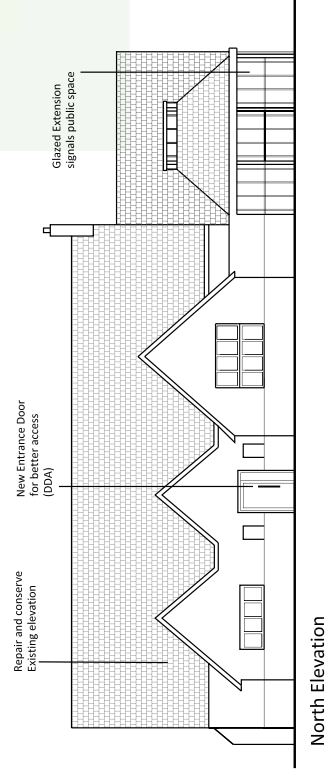
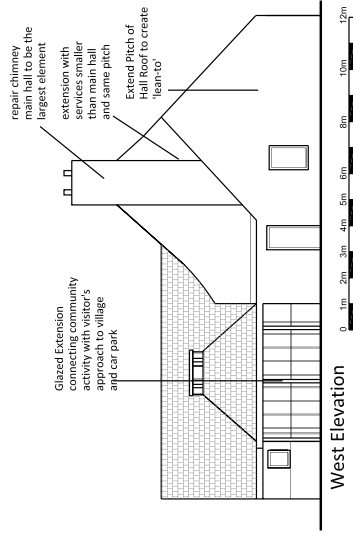
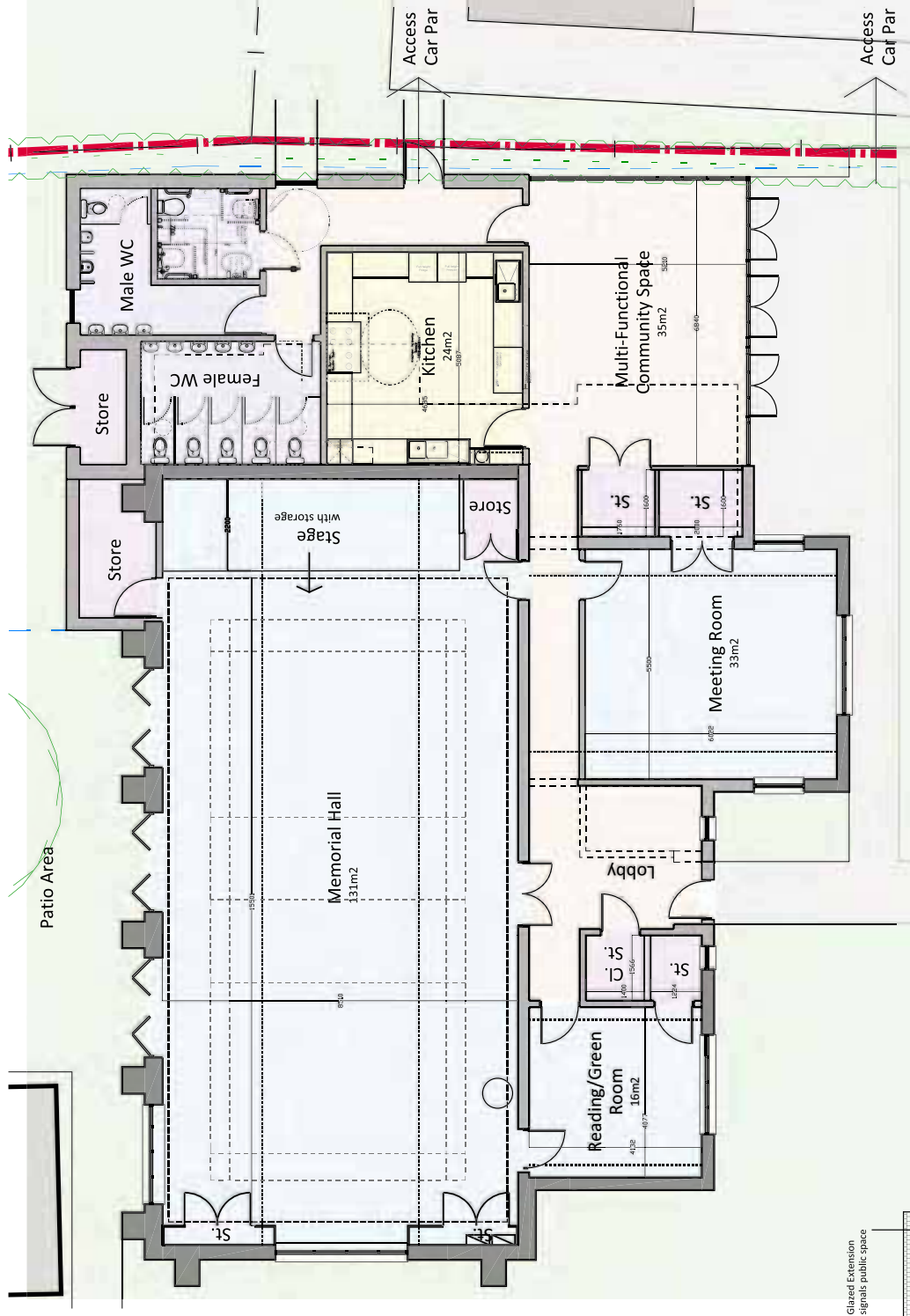


# 04 OPTIONS APPRAISAL: OPTION A

Option B- 130m2

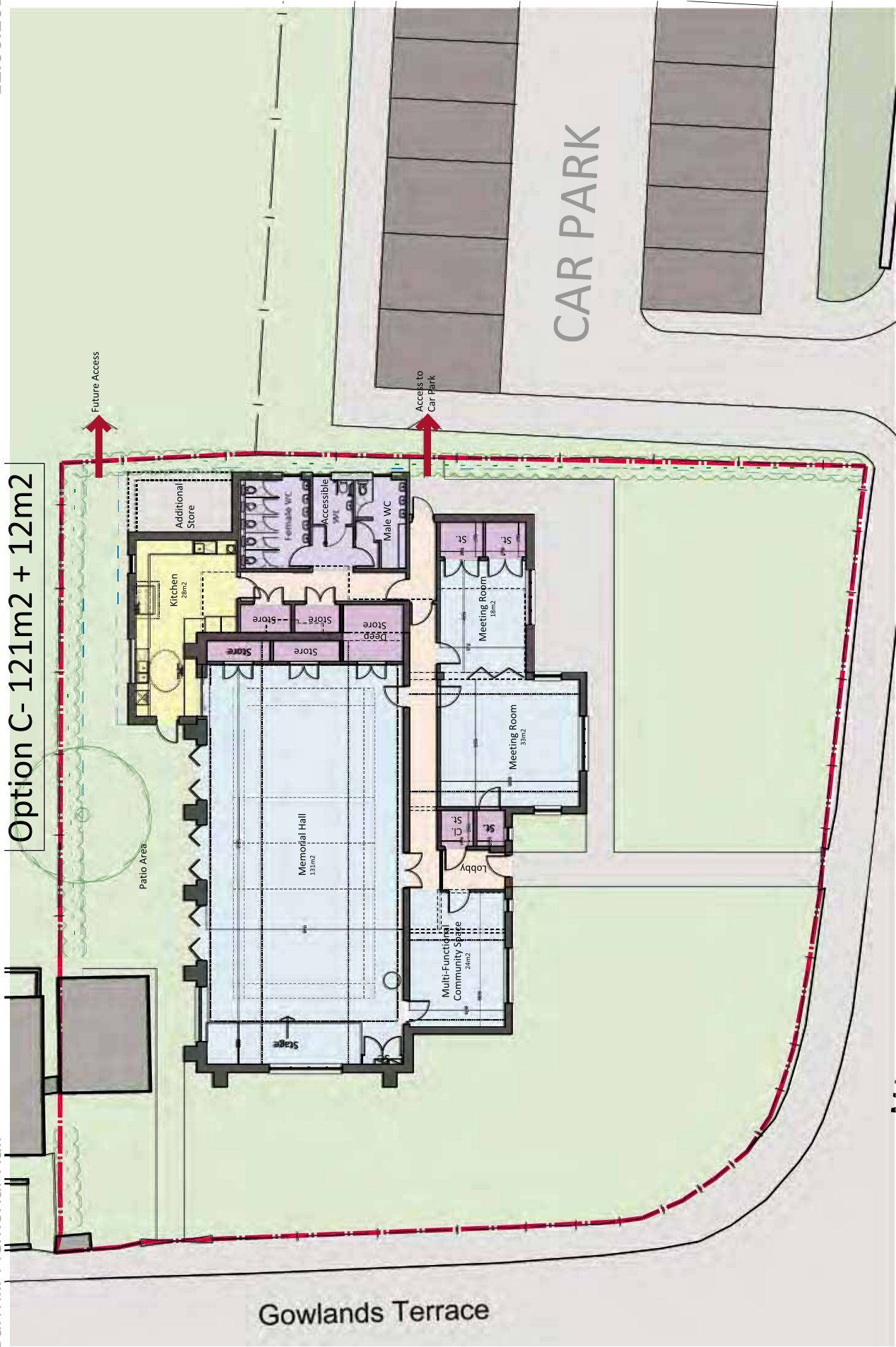


04 OPTIONS APPRAISAL: OPTION B

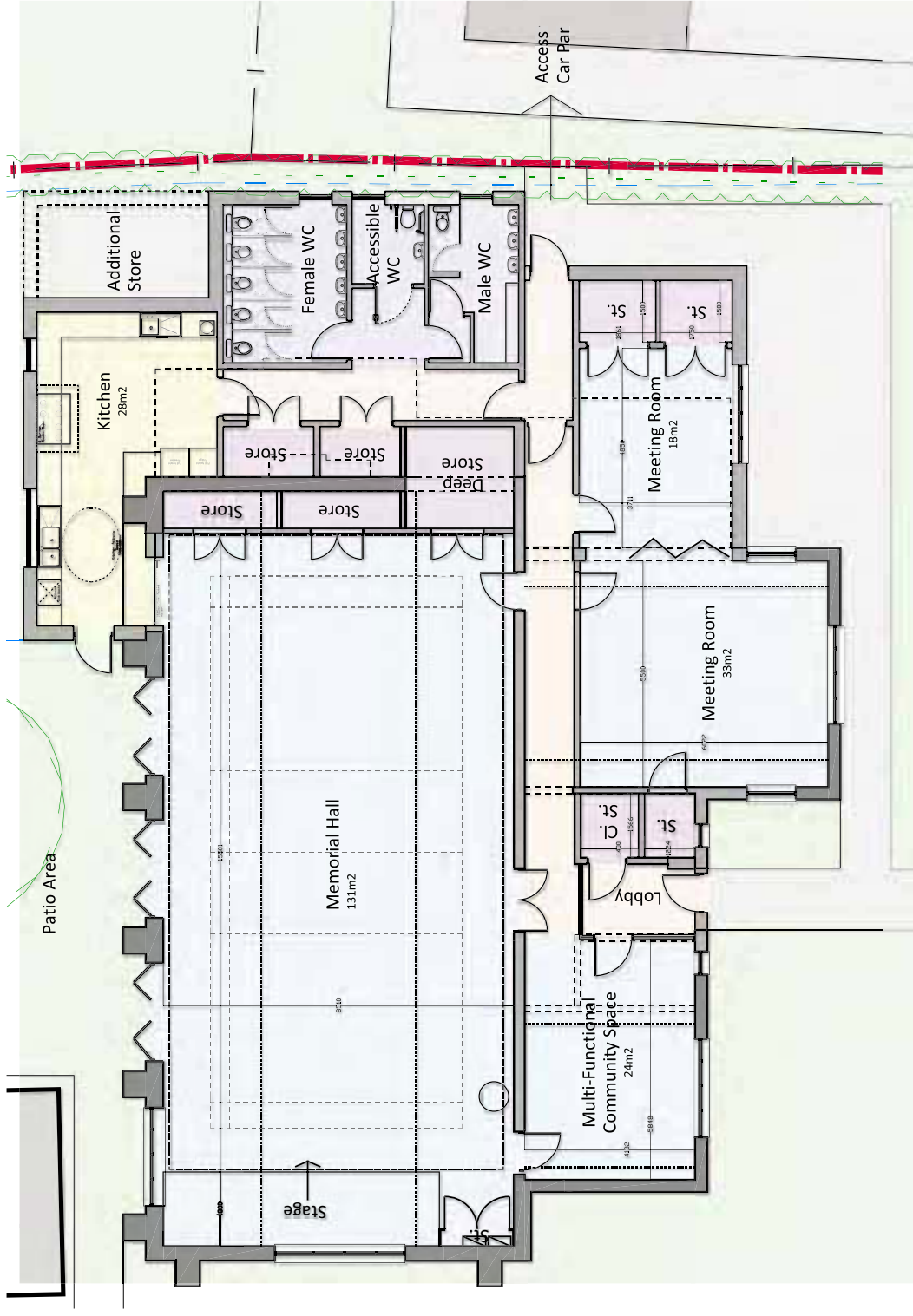


# 04 OPTIONS APPRAISAL: OPTION B

Option C - 121m<sup>2</sup> + 12m<sup>2</sup>

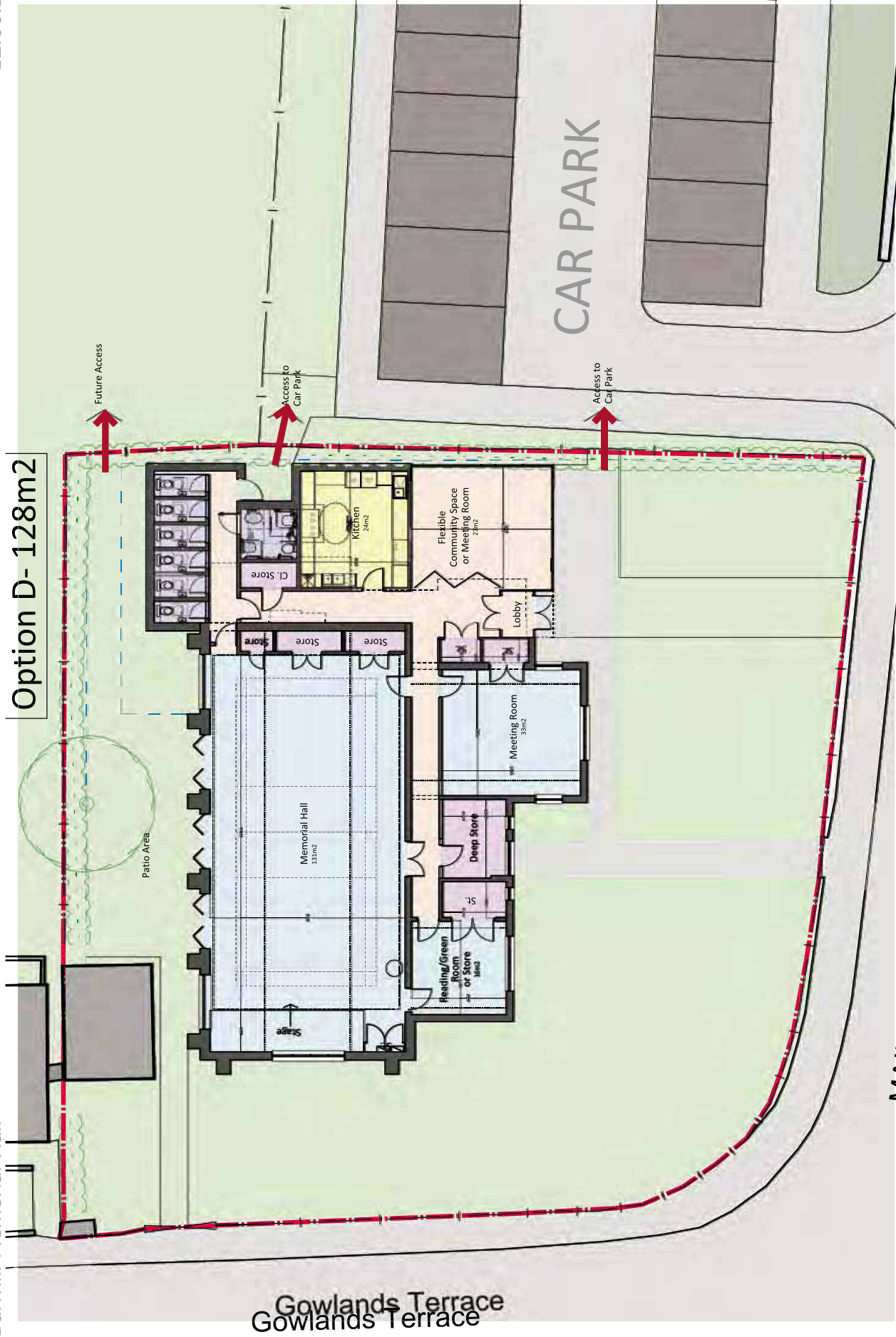


04 OPTIONS APPRAISAL: OPTION C



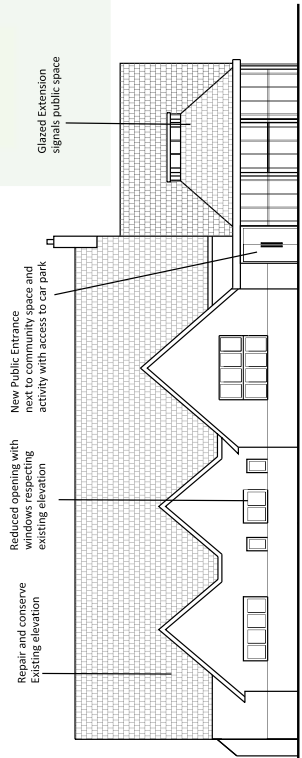
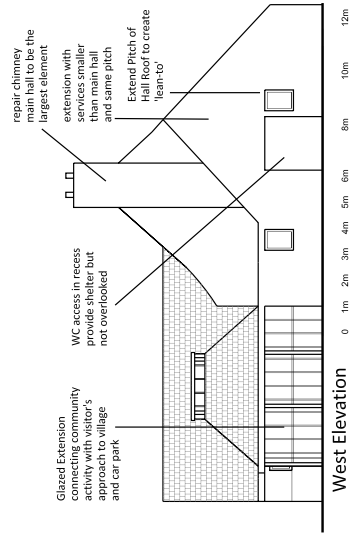
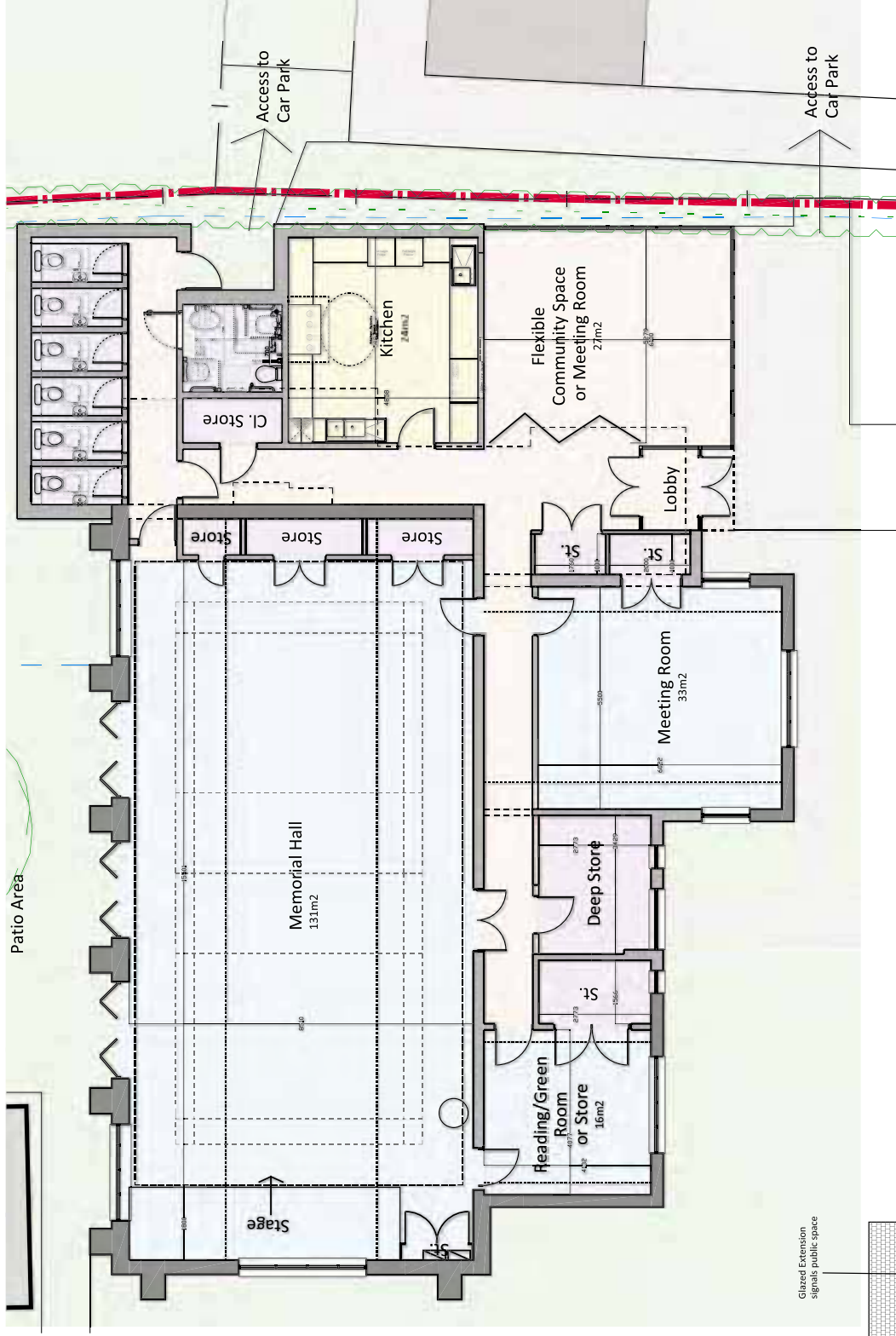
## 04 OPTIONS APPRAISAL: OPTION C

Option D- 128m<sup>2</sup>

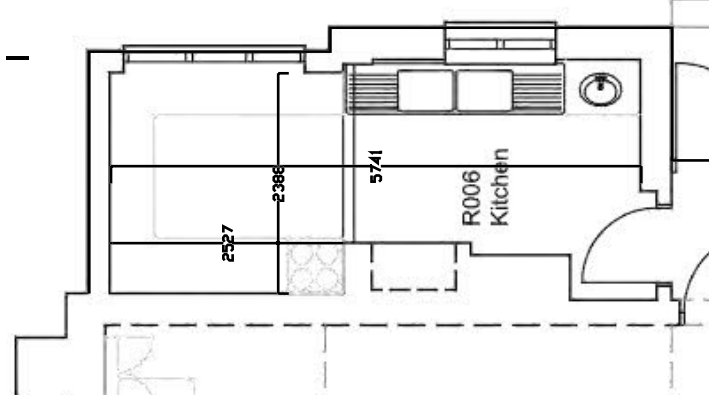


04 OPTIONS APPRAISAL: OPTION D

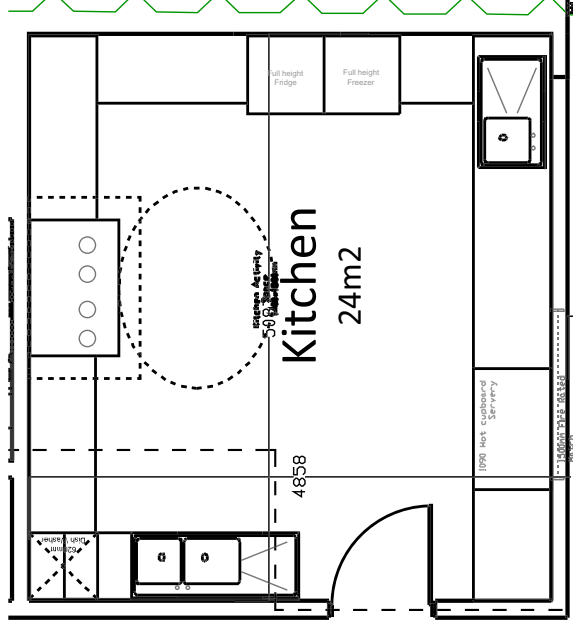




**04 OPTIONS APPRAISAL: OPTION D**

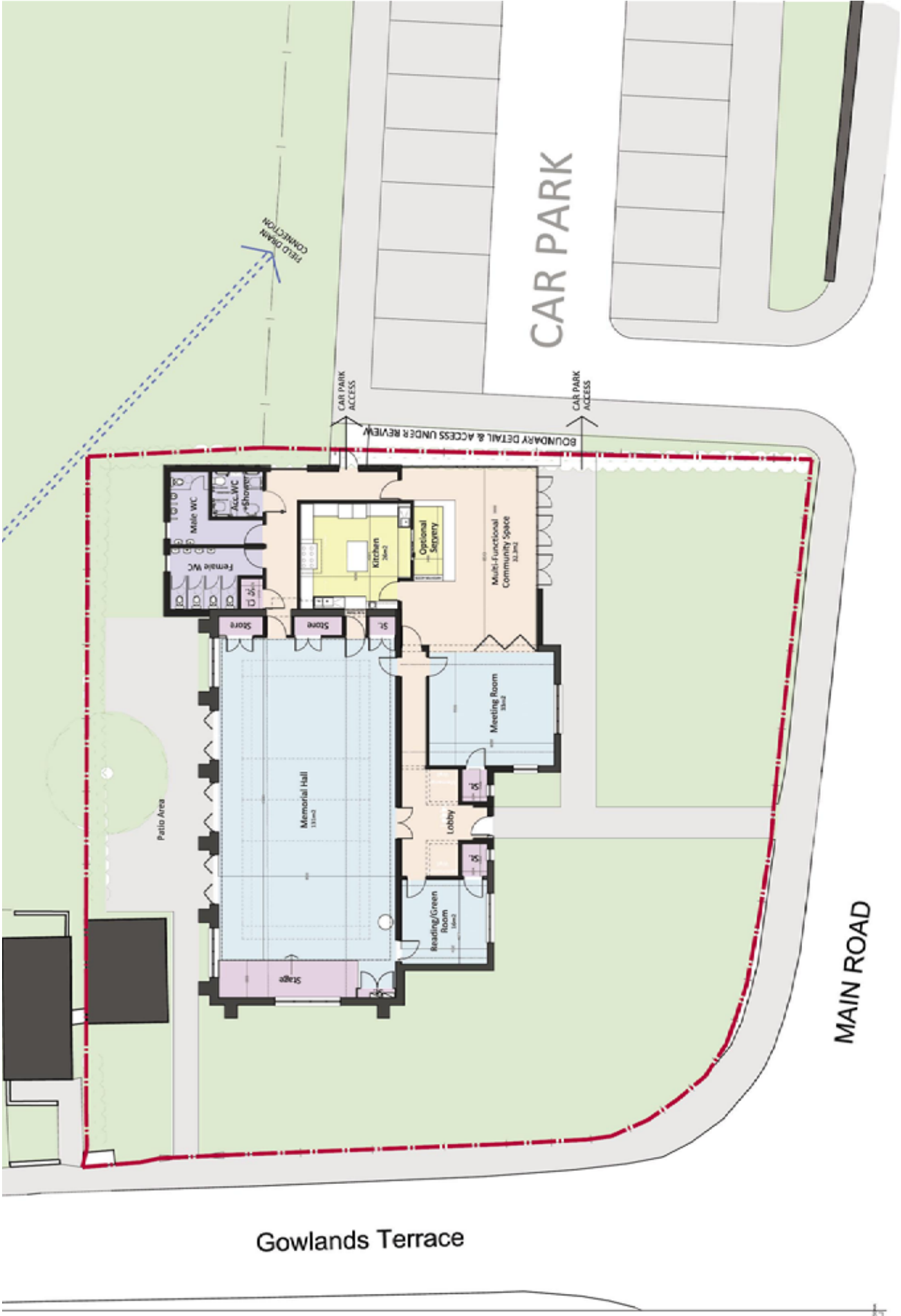


EXISTING KITCHEN



PROPOSED KITCHEN

## 05: DESIGN CONSIDERATIONS: KITCHEN SIZE



**REFURBISHING BARRHILL MEMORIAL HALL**  
*A Springboard to Make it Happen*

This project is part-financed by the Scottish Government, European Community and Avonshire LEADER 2007-2013 Programme. Also part-financed by Barrhill Memorial Hall Community Association.

# BARRHILL MEMORIAL HALL

# MEMORIAL HALL DESIGN UPDATE

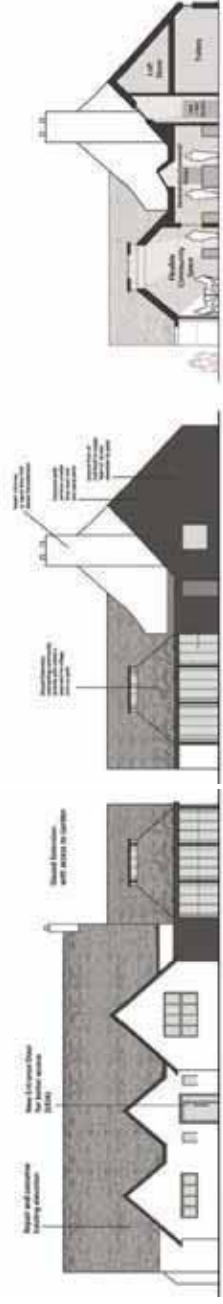
Using the community feedback from the Design leaflet we distributed around Barrhill in March, our architects at Anderson Bell Christie have further developed the proposals for the refurbishment and extension to the Memorial Hall.

The layout of the internal accommodation has been reviewed and rearranged to:

- facilitate more flexibility with the ability to open up the meeting room with the community space;
- maximise the size of the kitchen and allow demonstrations to take place and catering; - secure 24hr access to WCs;
- access to the car park and garden;
- maximise storage to each of the key spaces
- make the entrance more welcoming.

Before we progress any further and submit the Planning Application, we would welcome your comments of the latest proposals.

**Support your community! We'd like to hear from you!**  
Get in touch with the hall committee or email us on: [gen@andersonbellchristie.com](mailto:gen@andersonbellchristie.com)



**REFURBISHING BARRHILL MEMORIAL HALL**  
*A Springboard to Make it Happen*

This project is part-financed by the Scottish Government, European Community and Ayrshire LEADER 2007-2013 Programme. Also part-financed by Barrhill Memorial Hall Community Association

# BARRHILL MEMORIAL HALL